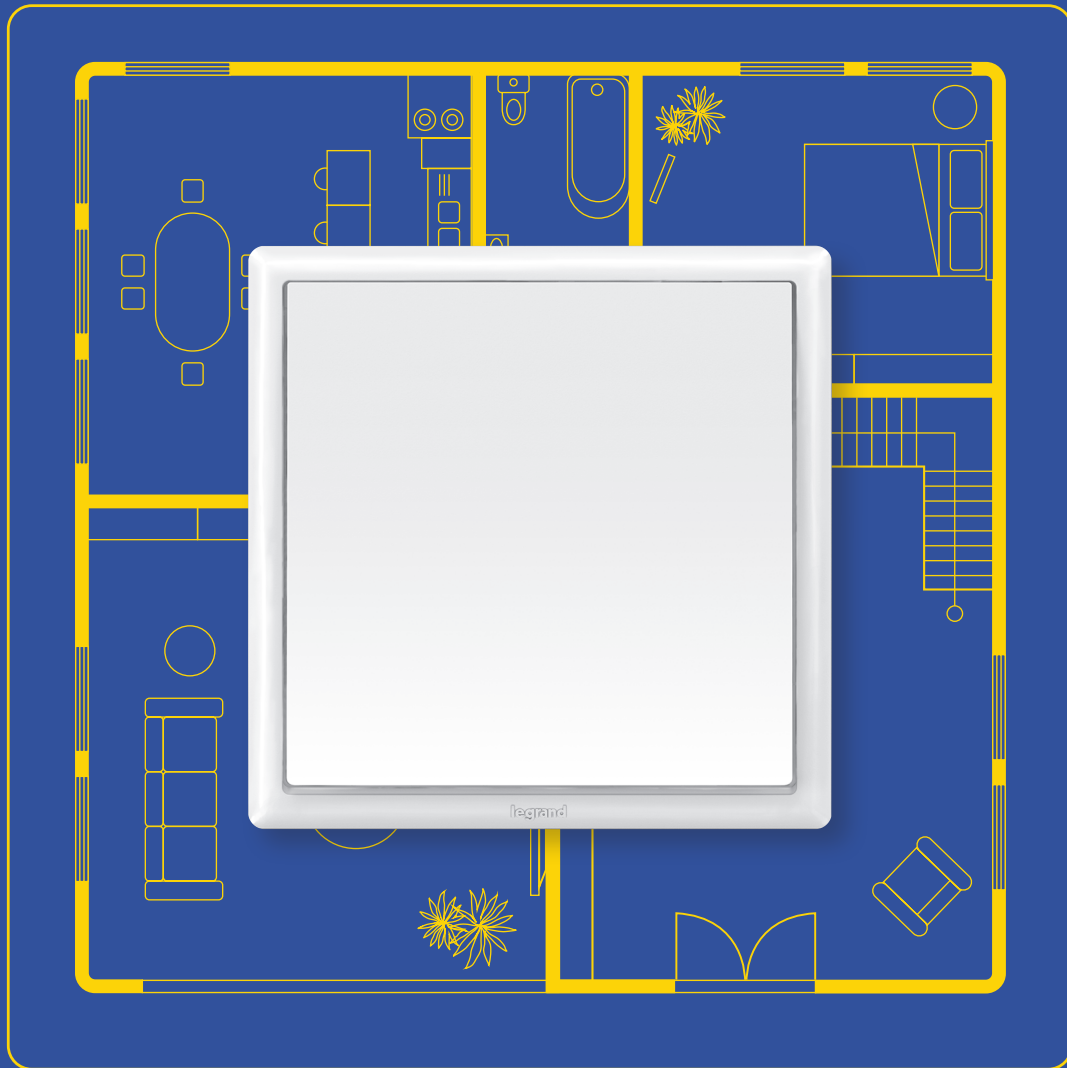


# ELOÉ™



Everything just **ADDS** up

THE **GLOBAL SPECIALIST**  
IN ELECTRICAL AND DIGITAL BUILDING INFRASTRUCTURES

 **legrand**®

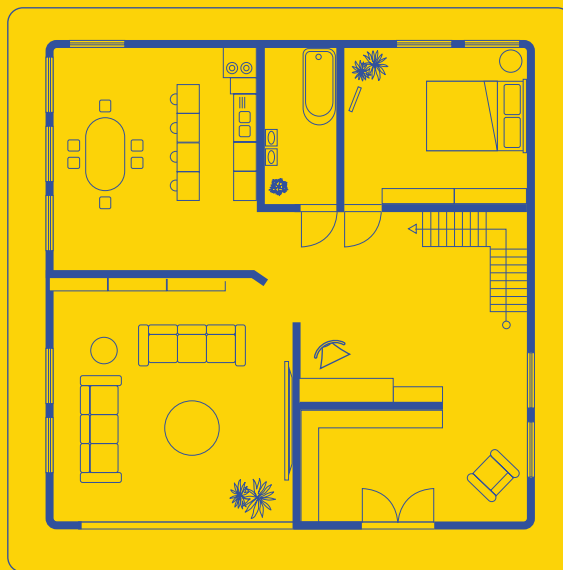
# ELOÉ™

When you choose **ELOÉ™** for your project, you are not just choosing a modern design and versatile functions, you are also opting for easy installation – and better value. **ELOÉ™** adds to your winning formula.

## CONTENTS

02 **ADD DETAILS** that matter  
04 **ADD VALUE** to your productivity  
06 **ADD POSSIBILITIES** to projects

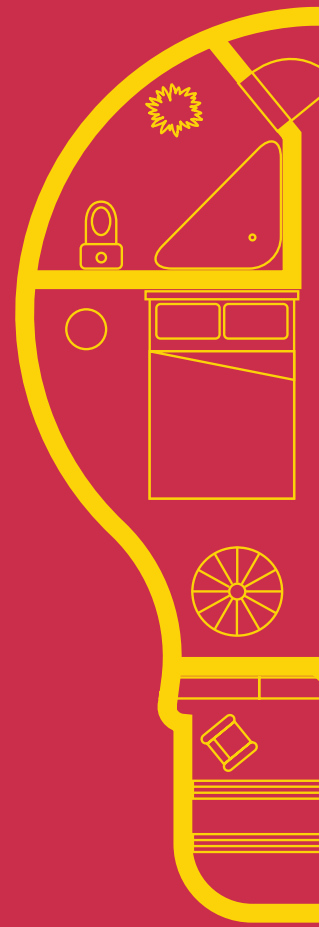
08 **ADD** a touch of **COMFORT**  
10 Catalogue pages



Everything just  
**ADDS** up

# ADD DETAILS that matter

Good design doesn't always have to be complex. With **ELOÉ™**, it combines details that make sense and add to the overall experience – for both users and installers.



**LARGE ROCKER**  
Ergonomically designed for a great user experience



**GLOSSY FINISH**  
Smooth glossy surface makes cleaning fuss-free.



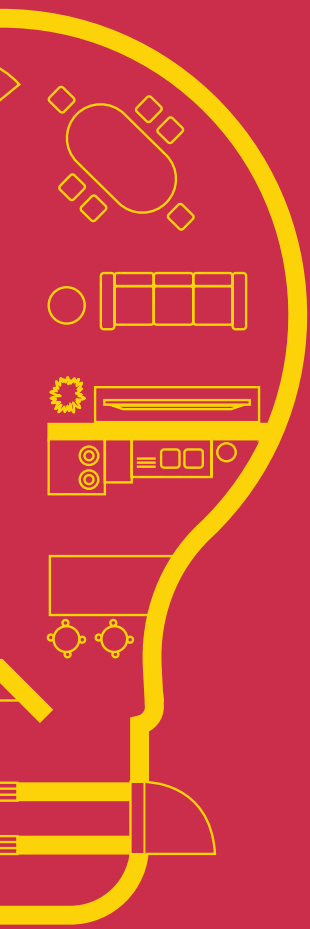
**COMPLIANT WITH STANDARDS**  
**ELOÉ™** is designed to meet international standards – IEC and BS.



**SUBTLE CURVES**  
Rounded corners and curves add a touch of elegance.



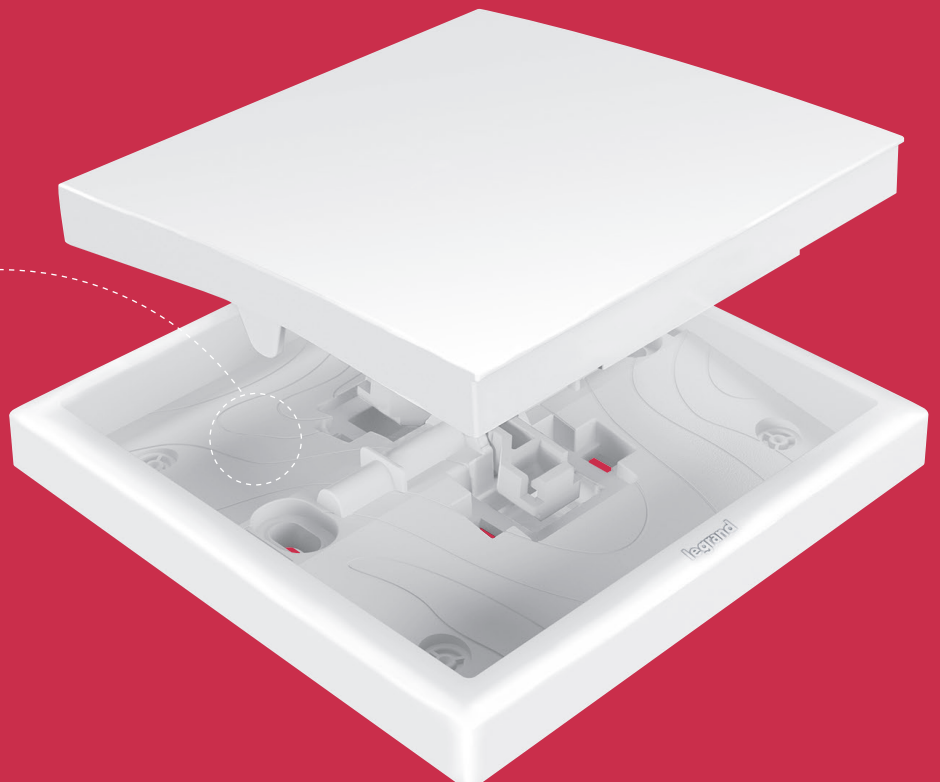
**STRONG PROFILE**  
Clean lines and a distinct shape enhance the visual appeal of **ELOÉ™**.



**Superior design  
and quality**

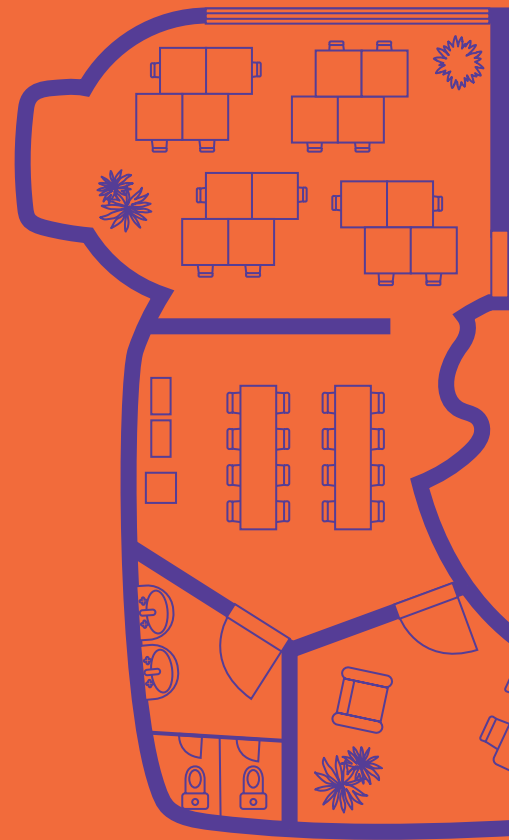


**DESIGNED TO LAST**  
Even the concealed functional parts have been carefully designed.



# ADD VALUE to your productivity

No matter how unpredictable the conditions at your worksite may be, **ELOÉ™** takes the uncertainty out of your project by making every installation simple, fuss-free, safe, on time – and on budget.



**TIME SAVING**  
Large terminal capacity allows for quick and easy wiring and connection to multiple outlets.

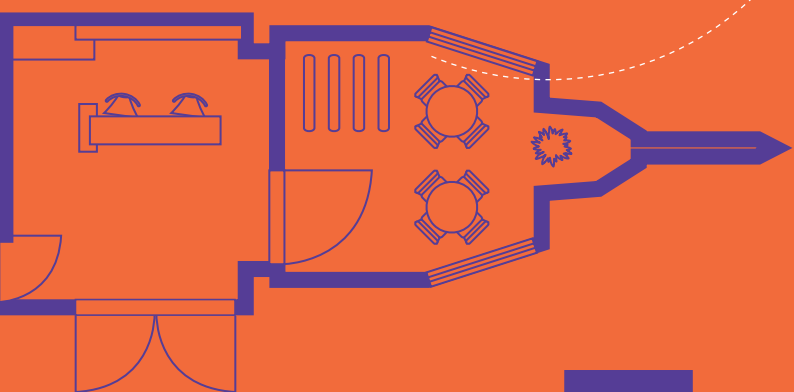


**ROBUSTNESS**  
Ribbs make the switch sturdy.

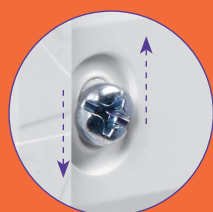


**UNIVERSAL SCREW HEADS**

For both wiring and adjusting **ELOÉ™**, you need only one screwdriver head to get the installation done.



**Easy installation**



**FLEXIBILITY**  
Oblong shaped holes ensure flexibility for easy adjustment when the switch is not straight.



**EASY TO ORDER**

1 catalogue number = 1 complete product

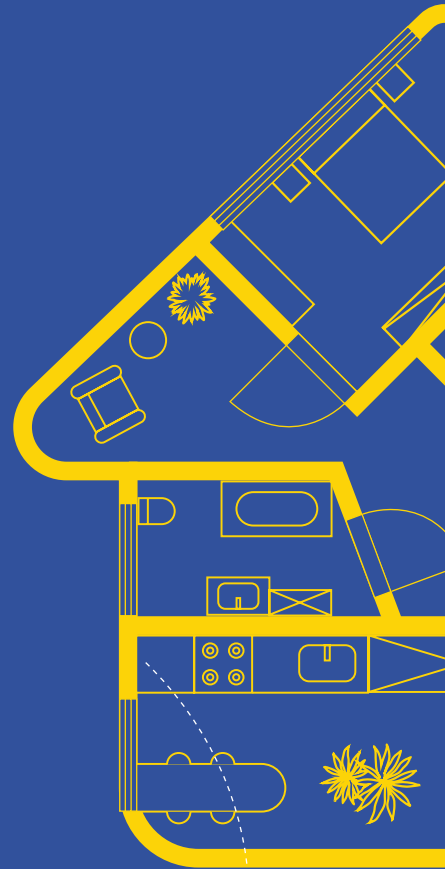


**SAFE AND FAST INSTALLATION**

No access to metal parts ensures your safety during installation. The one-piece plate/mechanism also means that installation can be completed in three simple steps.

# ADD POSSIBILITIES to projects

Whether you are working on an integrated development or a straightforward build, **ELOÉ™** provides the functions you need.



**UNIVERSAL DIMMER SUITABLE  
FOR ALL MODERN LOADS**



Dimmable  
LEDs



Dimmable  
compact  
fluorescent lamps



Incandescent  
and halogen  
lamps



Halogen lamps  
with electronic  
or ferromagnetic  
transformer



**4-gang switch**



**1-gang British standard  
switched 13A socket with  
USB Type-A charger**



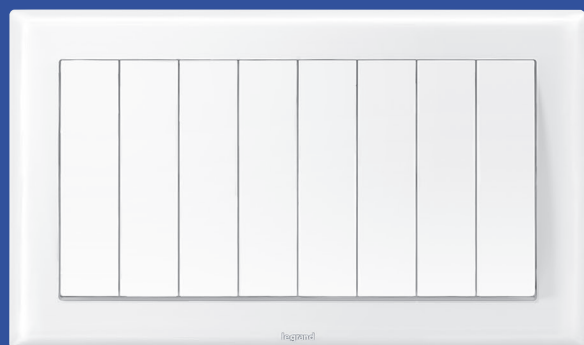


The splash-proof cover allows a 1-gang **ELOÉ™** mechanism to be installed in outdoor environments. It also ensures protection against dust. With plug engaged, IP55 protection is maintained.

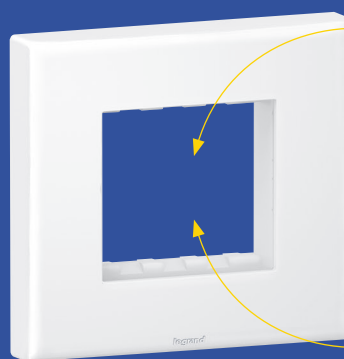
1-gang British standard 13A socket with USB Type-C charger and IP55 cover



## Versatility for modern living



2x4-gang switch in 2-gang box



Adapter for Arteor mechanism



Electronic room thermostat



HDMI socket



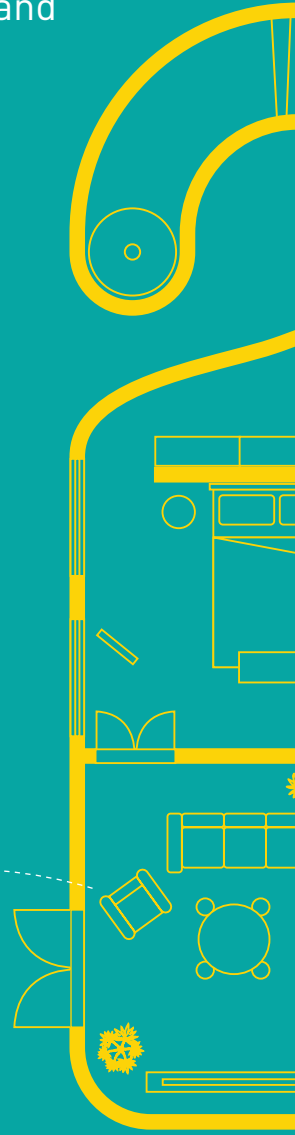
There is no settling for less. **ELOÉ™** works both independently and with the Arteor range. The Arteor adapter offers versatility for your every need – residential, commercial and hospitality projects.

# ADD a touch of **COMFORT**

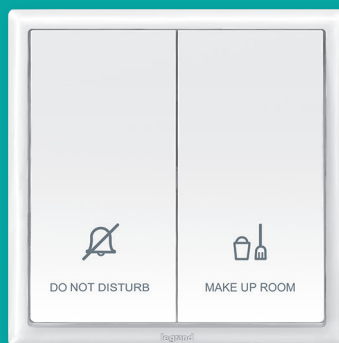
Comfort is the cornerstone of any hospitality project. That is why the **ELOÉ™** range provides dedicated hospitality functions for enhancing experiences in both guest rooms and shared spaces.



Key card switch



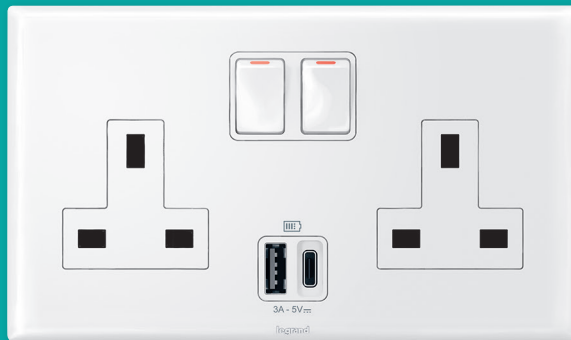
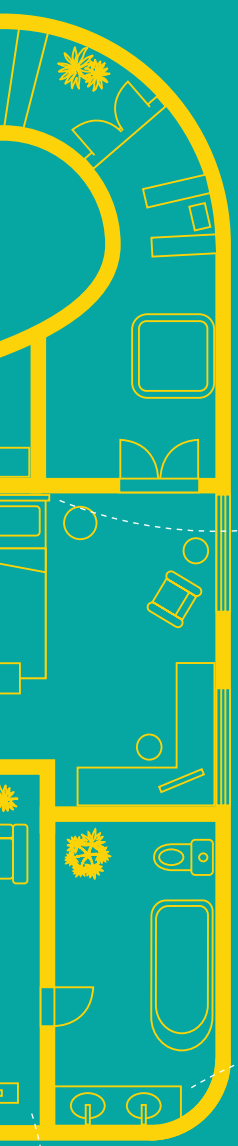
External indicator for corridor



Internal control unit



Keystone data socket



With this multipurpose socket, you can leave it to **ELOÉ™** to power and charge up your devices while you recharge yourself.

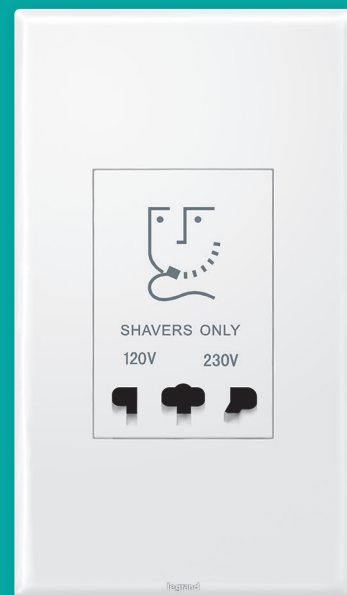
2-gang British standard switched 13A socket with USB Type-A & Type-C dual charger



# Better hospitality experiences



1-gang Multistandard switched 13A socket with USB Type-A charger



Shaver socket



6 180 01



6 180 05



6 180 07



6 180 11



6 180 16

Conform to BS EN 60669-1  
 Material: Thermoplastic with glossy finish  
 Dimensions: 86 x 86 x 9.5 mm (1-gang) / 86 x 146 x 9.5 mm (2-gang)  
 Supplied with 2 screws M3.5 for BS boxes

**Single pole switches 16 AX - 250 V~**

Pack	Cat.Nos	Description
10	6 180 00	1-gang 1-way switch ○ White
10	6 180 01	1-gang 2-way switch ○ White
10	6 180 02	2-gang 1-way switch ○ White
10	6 180 03	2-gang 2-way switch ○ White
10	6 180 09	Intermediate switch ○ White
10	6 180 04	3-gang 1-way switch ○ White
10	6 180 05	3-gang 2-way switch ○ White
10	6 180 06	4-gang 1-way switch ○ White
10	6 180 07	4-gang 2-way switch ○ White

**Single pole switches 16 AX - 250 V~ (continued)**

5	6 180 24	2x2-gang 2-way switch ○ White
5	6 180 66	2x3-gang 1-way switch ○ White
5	6 180 68	2x4-gang 1-way switch ○ White

**Single pole switches 20 AX - 250 V~**

10	6 180 20	1-gang 1-way switch ○ White
10	6 180 22	2-gang 1-way switch ○ White

**Push-buttons 6 A - 250 V~**

10	6 180 10	1-gang ○ White
10	6 180 15	2-gang ○ White
10	6 180 11	Bell push ○ White
10	6 180 16	2-gang for shutters ○ White

ELOÉ™

double pole switches and cooker control unit



6 180 72



6 180 76

Material: Thermoplastic with glossy finish  
 Dimensions: 86 x 86 x 9.5 mm (1-gang) / 86 x 146 x 9.5 mm (2-gang)  
 Supplied with 2 screws M3.5 for BS boxes

Pack	Cat.Nos	Double pole switches 20 A - 250 V~
10	6 180 70	1-gang 1-way switch + red neon indicator ○ White
10	6 180 71	1-gang 1-way switch + red neon indicator + 1 earth connection ○ White
10	6 180 71 SH	1-gang 2-way switch + red neon indicator + 2 earth connection ○ White
10	6 180 72	1-gang 1-way switch + red neon indicator + 1 earth connection with "Water Heater" marking ○ White
10	6 180 79	1-gang 2-way switch + red neon indicator + 1 earth connection with "Water Heater" marking ○ White

Pack	Cat.Nos	Double pole switches 32 A - 250 V~
10	6 180 74	1-gang 1-way switch + red neon indicator ○ White

Pack	Cat.Nos	Double pole switches 45 A - 250 V~
10	6 180 75	1-gang 1-way switch ○ White
10	6 180 76	1-gang 1-way switch + red neon indicator ○ White
5	6 180 77	2-gang 1-way vertical switch + red neon indicator ○ White
5	6 180 78	Cooker control unit - 250 V 45 A double pole switch + red neon and 13 A BS switched socket outlet + red neon ○ White

# ELOÉ™

dimmers and ventilation control



6 180 35

6 180 96

Material: Thermoplastic with glossy finish  
 Dimensions: 86 x 86 x 9.5 mm (1-gang)  
 Supplied with 2 screws M3.5 for BS boxes

Pack	Cat.Nos	Dimmers
1	6 180 31	<b>500 W RL dimmer</b> Push on/off and rotary dimmer - 50/60 Hz 1-gang 2-way : - 60-500W (230 V) for halogen lamps with electronic transformer with leading edge behaviour ○ White 
1	6 180 35	<b>200W LED + 300W Incandescent Rotary dimmer</b> For all types of lamps: - dimmable LEDs: 5 W to 200 W (10 lamps max. 5 W to 37 W (100 V)) - dimmable compact fluorescent lamps: 5 W to 75 W (10 lamps max. 5 W to 37 W (100 V)) - halogen with ferromagnetic or electronic transformer: 5 VA to 300 VA / 5 VA to 150 VA (100 V) - fluorescent tube - ballast: 5 VA to 300 VA / 5 VA to 150 VA (100 V) - halogen and incandescent 240 V 5 W to 300 W / 5 W to 150 W (100 V) When switched on, gradually (2 seconds) lights up at the level set before last switch-off ○ White 
1	0 401 49	<b>Active Power Compensator</b> Makes 2-wire electronic lighting control units without neutral compatible with all commercially-available loads (LED, compact fluorescent, ELV halogen with ferromagnetic or electronic ballast, 230 V halogen, fluorescent tube, incandescent) Consumption 0.4 W 
1	6 180 96	<b>5-speed fan control</b> Conform to BS EN 60669-2-1 <b>Fan control 240 V ~ - 50 Hz 100VA</b> ○ White 

# ELOÉ™

television and telephone sockets



6 180 27

6 180 38

6 180 95

Material: Thermoplastic with glossy finish  
 Dimensions: 86 x 86 x 9.5 mm (1-gang)  
 Supplied with 2 screws M3.5 for BS boxes

Pack	Cat.Nos	Television sockets
10	6 180 27	<b>Single TV socket, female</b> ○ White 
10	6 180 26	<b>Single TV socket, F-type</b> ○ White 
10	6 180 38	<b>Double TV socket, female + SAT, F-type</b> ○ White 
5	6 180 32	<b>TV-R-SAT socket</b> ○ White 
5	6 180 95	<b>Telephone sockets</b> <b>BS master</b> ○ White 
10	6 180 97	<b>RJ 11 socket</b> ○ White 

# ELOÉ™

data sockets



# ELOÉ™

hotel equipment



6 180 93



6 180 34

Material: Thermoplastic with glossy finish  
 Dimensions: 86 x 86 x 9.5 mm (1-gang)  
 Supplied with 2 screws M3.5 for BS boxes

Pack	Cat.Nos	Data sockets
10	6 180 93	<b>RJ 45 Cat.5 UTP</b> ○ White
10	6 180 91	<b>RJ 45 Cat.6 UTP</b> ○ White
10	6 180 92	<b>Double RJ 45 Cat.6 UTP</b> ○ White
10	6 180 17	<b>1-gang - single Keystone adaptor</b> ○ White
10	6 180 34	<b>1-gang - double Keystone adaptor</b> ○ White



6 180 12



6 180 18



6 180 37 + 5 720 78

Material: Thermoplastic with glossy finish  
 Dimensions: 86 x 86 x 9.5 mm (1-gang) / 86 x 146 x 9.5 mm (2-gang)  
 Supplied with 2 screws M3.5 for BS boxes

Pack	Cat.Nos	Key card switch
1	6 180 12	<b>Key card switch</b> 16 A - 230 V~ - 50/60 Hz Time delay of approx. 30 s after card removal Use card with width max. 54 mm ○ White
10	6 180 13	<b>Hotel bedroom call indicators</b> Enable the resident to inform hotel staff of the room status. 2 settings: - Do not disturb - Make up room <b>External Indicator for corridor</b> Installed in the corridor, displays calls ○ White
10	6 180 14	<b>Internal control unit</b> Installed in the room, allows the user to select the desired setting ○ White
1	6 180 18	<b>Shaver sockets</b> Conform to BS 61558. 115/230 V - 20 VA - 50/60 Hz Surface or flush-mounting, back box to be min. 47 mm deep. Spacer delivered to fit in standard box, 35 mm deep <b>2-gang</b> ○ White
10	6 180 37	<b>Arteor adaptor</b> Allows the integration of 2-module Arteor mechanisms such as R.C.B.O., automatic switch, skirting light, USB charger, etc <b>1-gang</b> ○ White

For integration of Arteor functions, see **Arteor offer**





6 180 41



6 180 49



6 180 58



6 180 44

Material: Thermoplastic with glossy finish  
 Dimensions: 86 x 86 x 9.5 mm (1-gang) / 86 x 146 x 9.5 mm (2-gang).  
 Supplied with 2 screws M3.5 for BS boxes

Pack	Cat.Nos	British Standard socket outlets 13 A - 250 V $\sim$
10	6 180 41	Conform to BS 1363-2 <b>1-gang single pole switched</b> ○ White 
5	6 180 46	<b>2-gang single pole switched</b> ○ White 
10	6 180 40	<b>1-gang unswitched</b> ○ White 
5	6 180 45	<b>2-gang unswitched</b> ○ White 
10	6 180 43	<b>1-gang double pole switched</b> ○ White 
5	6 180 73	<b>1-gang double pole switched 2 earth terminal</b> ○ White 
5	6 180 48	<b>2-gang double pole switched</b> ○ White 
10	6 180 42	<b>1-gang single pole switched + neon</b> ○ White 
5	6 180 47	<b>2-gang single pole switched + neon</b> ○ White 
5	6 180 49	<b>2-gang single pole switched with red cover + neon</b> ● Red 

Pack	Cat.Nos	British Standard socket outlets 13 A - 250 V $\sim$ with USB charger
1	6 180 58	Conform to BS 1363-2 Conform to IEC 60950-1 <b>1-gang single pole switched with USB Type-A</b> 3 A - 5 V $\sim$ 15 W Consumption in passive mode < 0.08 W ○ White 
1	6 180 57	<b>1-gang unswitched with USB Type-A</b> 3 A - 5 V $\sim$ 15 W Consumption in passive mode < 0.08 W ○ White 
1	6 180 30	<b>1-gang unswitched with USB Type-C</b> 3 A - 5 V $\sim$ 15 W Consumption in passive mode < 0.08 W ○ White 
1	6 180 44	<b>2-gang single pole switched with USB Type-A + Type-C</b> 3 A - 5 V $\sim$ 15 W Consumption in passive mode < 0.08 W ○ White 

Pack	Cat.Nos	British Standard socket outlets 15 A - 250 V $\sim$
10	6 180 51	Conform to BS 546 <b>1-gang single pole switched</b> ○ White 
5	6 180 52	<b>1-gang single pole switched + neon</b> ○ White 
5	6 180 53	<b>2-gang single pole switched</b> ○ White 

Pack	Cat.Nos	British Standard socket outlets 5 A - 250 V $\sim$
10	6 180 54	Conform to BS 546 <b>1-gang single pole switched</b> ○ White 





6 180 64



6 180 55

Material: Thermoplastic with glossy finish  
 Dimensions: 86 x 86 x 9.5 mm (1-gang) / 86 x 146 x 9.5 mm (2-gang)  
 Supplied with 2 screws M3.5 for BS boxes

Pack	Cat.Nos	Euro/US socket outlets - 16 A - 250 V $\sim$ / 15 A - 127 V $\sim$
10	6 180 62	<b>1-gang 2 x 2P</b> ○ White 
10	6 180 90	<b>1-gang 2 x 2P switched</b> ○ White 
10	6 180 64	<b>1-gang 2 x 2P+E</b> ○ White 
10	6 180 56	<b>German Standard socket outlet 16 A - 250 V<math>\sim</math></b> <b>1-gang 2P+E with shutters for child protection</b> ○ White 
10	6 180 67	<b>Multistandard switched socket outlet 15 A 127 V<math>\sim</math> / 16 A 250 V<math>\sim</math></b> <b>1-gang</b> ○ White 
5	6 180 69	<b>2-gang</b> ○ White 

Pack	Cat.Nos	Multistandard switched socket and Euro/ US socket outlets
10	6 180 65	<b>1-gang</b> ○ White 
1	6 180 59	<b>Multistandard switched socket outlets 16 A 250 V<math>\sim</math> / 15 A - 127 V<math>\sim</math> with USB charger</b> Shuttered for child safety USB charger conform to IEC 60950-1 <b>1-gang 2P+E with USB Type-A</b> 3 A - 5 V $\equiv$ 15 W Consumption in passive mode < 0.08 W ○ White 
1	6 180 55	<b>2-gang 2 x 2P+E with USB Type-A + Type-C</b> 3 A - 5 V $\equiv$ 15 W Consumption in passive mode < 0.08 W ○ White 

# ELOÉ™

fused connection units and cable outlets



6 180 82



6 180 85

Material: Thermoplastic with glossy finish  
 Dimensions: 86 x 86 x 9.5 mm (1-gang) / 86 x 146 x 9.5 mm (2-gang)  
 Supplied with 2 screws M3.5 for BS boxes

## Fused connection units 13 A

Pack	Cat.Nos	Description
10	6 180 80	Conform to BS 1363-4 <b>Unswitched + cord outlet</b> ○ White
5	6 180 81	<b>Switched + cord outlet</b> ○ White
10	6 180 60	<b>Unswitched + neon + cord outlet</b> ○ White
10	6 180 82	<b>Switched + neon + cord outlet</b> ○ White

Pack	Cat.Nos	Description
10	6 180 85	Conform to BS 5733 <b>20 A - 250 V~</b> ○ White
10	6 180 86	<b>45 A - 250 V~</b> ○ White

# ELOÉ™

blanking plates and accessories



6 180 28



6 180 37 + 5 720 72



6 176 36 + 6 180 30

## Blanking plates

Pack	Cat.Nos	Description
10	6 180 28	Conform to IEC 60670-1 <b>1-gang</b> ○ White
10	6 180 39	<b>2-gang</b> ○ White

## Arteor adaptor

Pack	Cat.Nos	Description
10	6 180 37	Allows the integration of 2-module Arteor mechanisms such as R.C.B.O., automatic switch, skirting light, USB charger, etc <b>1-gang</b> ○ White

## Fixing accessories

Pack	Cat.Nos	Description
4	6 176 36	<b>Splash-proof cover</b> Mainly for socket protection IP 55 with or without plug engaged Space inside : 86 x 86 mm External dimensions : 129,2 x 107,2 x 54,1 mm ● Mist grey

## Surface-mounting boxes

Pack	Cat.Nos	Description
8	6 133 50	Conform to BS 5733 Depth 35 mm <b>1-gang</b> ○ White
4	6 133 51	<b>2-gang</b> ○ White

For integration of Arteor functions, see **Arteor offer**







#### Head Office


and International Department  
87045 Limoges Cedex - France

+ 33 (0) 5 55 06 87 87

+ 33 (0) 5 55 06 74 55

#### FOLLOW US ON:

 [www.legrand.ae](http://www.legrand.ae)

 [legrandgulfcountries](https://www.linkedin.com/company/legrandgulfcountries)

 [legrandgulfcountries](https://www.youtube.com/channel/UCv8v8v8v8v8v8v8v8v8v8v8)

 [legrandgulfcountries](https://www.facebook.com/legrandgulfcountries)

 [legrandgulfcountries](https://www.instagram.com/legrandgulfcountries)

#### Iraq

Tel: (+962) 799 040 329  
(+962) 655 375 86

#### Jordan

Al Madina Al Monawara Street,  
Tlaa' Al Ali, Building no. 263  
Rana Center – 3rd floor  
Offices 301 & 302  
Amman – Jordan

Tel: (+962) 655 375 86  
Fax: (+962) 655 375 89

#### Kuwait

Shuwaikh  
P.O. Box 177  
Safat 13002, Kuwait

Tel: (+965) 972 626 99  
Fax: (+965) 248 247 54

#### Lebanon

Achrafieh 5585 Bldg. 6th floor  
P. Gemayel Avenue – Aadlieh  
Beirut, Lebanon

Tel: (+961) 1 422 166  
Fax: (+961) 1 422 167

#### Oman

Tel: (+968) 913 979 78

#### Pakistan

Tel: (+962) 799 040 329  
(+962) 655 375 86

#### Qatar

Global Business Center,  
Al Hitmi Village Bldg #8,  
4th Floor, Office #R2  
Corniche Road  
Doha, Qatar

Tel: (+974) 4 402 3018  
Fax: (+974) 4 436 6673

#### Kingdom Of Saudi Arabia

##### Jeddah

(Western Region Office-Head Office)  
Al-Reem Business Center, 2nd Floor  
Al-Rawdah District  
P.O.Box: 51712, Jeddah 21553  
Kingdom of Saudi Arabia

Tel: (+966) 2 261 9696  
Fax: (+966) 2 261 9797

##### Riyadh (Central Region Office)

Al-Sulaiman Square Building,  
2nd Floor, Office 16,  
Mousa Bin Nusair Street  
P.O. Box 325099  
Riyadh, Kingdom of Saudi Arabia

Tel: (+966) 11 466 6640  
Fax: (+966) 11 279 0117

##### Al Khobar (Eastern Region Office)

Al-Khobar Mall,  
2nd Floor, Office 362  
P.O. Box 927  
Al Khobar, Kingdom of Saudi Arabia

Tel: (+966) 3 887 8950  
Fax: (+966) 3 887 8952

#### United Arab Emirates

##### Main representative office

##### Legrand Gulf Countries

Wing C, Office 701  
Dubai Silicon Oasis Authority  
P.O. Box 341068  
Dubai, United Arab Emirates

Tel: (+971) 4 382 1821  
Fax: (+971) 4 382 1822

##### GemNet Gulf L.L.C.

(A group company of Legrand)  
Street No. 26, Al Quoz Industrial Area 4,  
P.O. Box 52914,  
Dubai, United Arab Emirates

Tel: (+971) 4 341 9920  
Fax: (+971) 4 341 9940